



ODS Portal

portal.opendiscoveryspace.eu

Registration

Do you want to join the ODS portal?

Follow these steps!



The Open Discovery Space Project is funded by
CIP-ICT-PSP-2011-5, Theme 2: Digital Content,
Objective 2.4: eLearning Objective 2.4



1. Visit the portal



The screenshot shows the ODS portal homepage with the following sections:

- Header:** ODS logo, login fields for Username or e-mail and Password, and a 'Log In' button. A link for 'Request new password' is also present.
- Navigation:** 'linkup, create, share, grow' slogan, a 'New in ODS? Join our teachers' community' badge, and a search bar for educational resources.
- Main Content:** A featured article titled 'Virtual visit of the Portuguese students to CERN' with a photo of students in a classroom.
- Statistics Grid:**

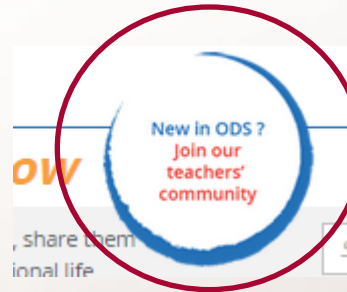
RESOURCES	COMMUNITIES	SCHOOLS	TEACHERS	ODS ACADEMIES
EXPLORE OUR TOOLS IN THE CLASSROOM AND PLAN YOUR LESSONS	SHARE EDUCATIONAL CONTENT THROUGH COMMUNITIES OR START YOUR OWN	NAVIGATE THROUGH THE SCHOOLS OF ODS NETWORK	BEING CONNECTED WITH OUR TEACHERS FROM ALL OVER THE EUROPE	FOLLOW THE ODS ACADEMIES TO IMPROVE YOUR PROFESSIONAL EDUCATION
807718 RESOURCES	576 COMMUNITIES	2891 SCHOOLS	7757 TEACHERS	152 ACTIVITIES
- NEWS:** Three news items with dates and brief descriptions.
- COMMUNITY EVENTS:** Three event listings with dates and titles.
- ODS THEMATIC PORTALS:** Three circular icons representing 'Science & Technology', 'World of Entrepreneurship', and 'Geospatial Thinking'.



The Open Discovery Space Project is funded by CIP-ICT-PSP-2011-5, Theme 2: Digital Content, Objective 2.4: eLearning Objective 2.4

2.

Click on “Register”




Username or e-mail

Password

linkup, create, share, grow **learn more about ODS**

Supports teachers in creating unique teaching resources, share them within communities of interest and grow in their professional life

Search for educational resources...

'Landing on a comet! The Rosetta project...'

Congratulations to the winner of this year's Greek Educational Scenario Contest in ODS: The...

RESOURCES	COMMUNITIES	SCHOOLS	TEACHERS	ODS ACADEMIES
EXPLORE OUR TO USE IN THE CLASSROOM AND PLAN YOUR LESSONS	SHARE EDUCATIONAL CONTENT THROUGH COMMUNITIES OR START YOUR OWN	NAVIGATE THROUGH THE SCHOOLS OF ODS NETWORK	BRING CONNECTED WITH OUR TEACHERS FROM ALL OVER THE EUROPE	FOLLOW THE ODS ACADEMIES TO IMPROVE YOUR PROFESSIONAL EDUCATION
807718 RESOURCES	576 COMMUNITIES	2891 SCHOOLS	7757 TEACHERS	152 ACTIVITIES

NEWS

- Έκλειψη ηλίου - 20... Friday, March 20, 2015
Δείτε την ολική έκλειψη ηλίου από τη Νορβηγία και την...
- Star (and planet)... Monday, March 09, 2015
We kindly invite you to join the Star Gard planet...
- German National Contest... Friday, February 20, 2015
Challenged by a short period of time to come up with an...

COMMUNITY EVENTS

- Prijenos uživo... Monday, March 23, 2015
Vaditelj planetarija i astronomičkim Tehničkom...
- Webinar: Σχεδίαση... Monday, March 23, 2015
"Ο γρίφος που μπηδύσαν οι άνθρωποι είναι ιδέα...
- Webinar: Σχεδίαση... Monday, March 23, 2015
"Ο γρίφος που μπηδύσαν οι άνθρωποι είναι ιδέα...



The Open Discovery Space Project is funded by CIP-ICT-PSP-2011-5, Theme 2: Digital Content, Objective 2.4: eLearning Objective 2.4

3.a

Register to the Portal



Register in ODS Portal



OR

Register and join one of the ODS Communities

Register and join one of the ODS Communities

Register in ODS Portal

Register and join one of the ODS Communities

Login information

Name *

Username *

E-mail address *

Confirm e-mail address *

Member Type *

Accept Privacy Policy *

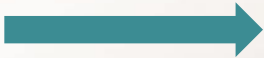
Read the privacy policy

CAPTCHA

Type the text

Create new account

Register in ODS Portal



3.b

Register to a specific Community from HERE

Search existing Communities | Create new Community

Search Communities by:

Title: School: Country: Community Domain

Sort by: Most Popular

1 - 15 out of 575

Open Science Resources - OSR community

Domain: Science

1 362

The Open Science Resources (OSR) community enables you to access the finest digital collections in European science centres and museums, to follow educational activities connecting objects tagged with semantic metadata and to enrich the resources provided with social tags of your own choice. The OSR community contains educational material in the form of educational content (images of...)

Visit the community to see more

Discover the COSMOS

Domain: Science

1 093

This community brings together teachers who are using resources, physical experiments and online labs from the fields of Astronomy and High Energy Physics (HEP). Among other activities, it provides access training, resources and to a network of robotic telescopes and the major CERIN experiments, ATLAS and CMS. We focus on a range of science & astronomy topics that range...

Visit the community to see more

Κατάρτιση εκπαιδευτικών στην εκπαίδευση για ανάπτυξη ικανοτήτων

724

Η συγκεκριμένη κοινότητα αφορά Έλληνες εκπαιδευτικούς και είναι ένας χώρος για ανταλλαγή ιδεών, εμπειριών σχετικά με τη σχεδόν άρραστηρήτην με στόχο την ανάπτυξη των κοινότητων. Στην κοινότητα αυτή θα έχετε τη δυνατότητα: Αναζήτησης και θεωρητικής 'Εκπαιδευτικού Περιεχομένου' (Educational Content'), το οποίο στη συνέχεια μπορεί να αναρτηθεί ως ελέγχου Σελίδα...

Visit the community to see more



The Open Discovery Space Project is funded by CIP-ICT-PSP-2011-5, Theme 2: Digital Content, Objective 2.4: eLearning Objective 2.4

Are you in a Community page?



3.C
...OR from HERE



English Login

The screenshot shows the Open Discovery Space website interface. At the top right, there are links for 'English', 'Login', and a 'Register' button, which is circled in red. Below the navigation bar, there are tabs for 'Resources', 'Communities', 'Schools', 'People', and 'Academies'. The main content area displays the 'TRANSIT' community page, titled 'Κατάρτιση εκπαιδευτικών στην εκπαίδευση για ανάπτυξη ικανοτήτων'. The page includes a description of the community, its purpose, and various sections like 'ΟΜΑΔΕΣ', 'ΔΡΑΣΤΗΡΙΟΤΗΤΕΣ', 'ΓΕΓΟΝΟΤΑ', 'ΙΣΤΟΛΟΓΙΑ', 'ΣΥΖΗΤΗΣΕΙΣ', and 'ΨΗΦΟΦΟΡΕΙΣ'. On the right side, there is a 'Managed By' section with photos of Lamprini Kolovou and Katerina Riviou, and a 'Created on' and 'Last visited' date. At the bottom, there is a 'Network of related communities' section with social media icons for Facebook, Twitter, YouTube, LinkedIn, and Instagram. A statistics box at the bottom right shows: Members: 724, Groups: 3, Events: 17, Discussions: 1, Activities: 15, Blogs: 1, Polls: 1, Resources: 83.



The Open Discovery Space Project is funded by CIP-ICT-PSP-2011-5, Theme 2: Digital Content, Objective 2.4: eLearning Objective 2.4

4.

Fill in the registration form



Register in ODS Portal

[Register and join one of the ODS Communities](#)

Login Information

Name *

Username *

Spaces are allowed; punctuation is not allowed except for periods, hyphens, apostrophes, and underscores.

E-mail address *

A valid e-mail address. All e-mails from the system will be sent to this address. The e-mail address is not made public and will only be used if you wish to receive a new password or wish to receive certain news or notifications by e-mail.

Confirm e-mail address *

Please re-type your e-mail address to confirm it is accurate.

Member Type *

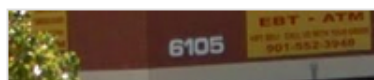
- Select a value - ▼

Accept Privacy Policy *

[Read the privacy policy](#)

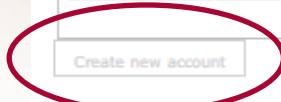
CAPTCHA

This question is for testing whether you are a human visitor and to prevent automated spam submissions.



Privacy & Terms

Create new account



5.

The Manager accepts your request



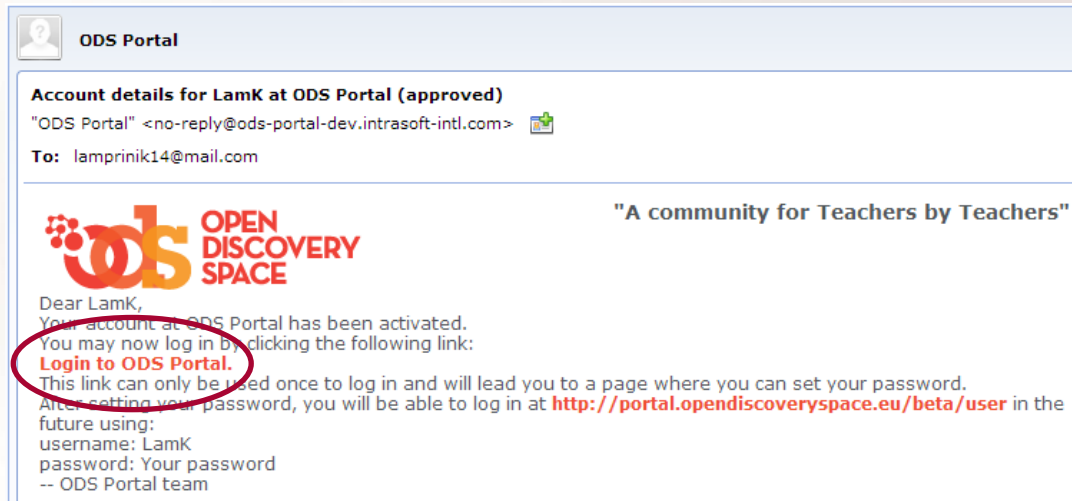
6.

You get an e-mail with instructions



7.

Follow the link and log-in to the Portal



8.



Login and complete your profile



Set your password

Set your language

Upload your picture

✔ You have just used your one-time login link. It is no longer necessary to use this link to log in. Please change your password.

Account Competence

Login Information Personal Information Portal Notifications

Name *

E-mail address *

A valid e-mail address. All e-mails from the system will be sent to this address. The e-mail address is not made public and will only be used if you wish to receive a new password or wish to receive certain news or notifications by e-mail.

Password
 Password strength: Good

Confirm password
 Passwords match: yes

To make your password stronger:

- Add uppercase letters
- Add punctuation

To change the current user password, enter the new password in both fields.

Language settings

Language

This account's default language for e-mails, and preferred language for site presentation.

[Locale settings](#)

Time zone

Select the desired local time and time zone. Dates and times throughout this site will be displayed using this time zone.

Picture
 No file chosen

Files must be less than 20 MB.
 Allowed file types: png gif jpg jpeg.

[Contact settings](#)

Personal contact form
Allow other users to contact you via a [personal contact form](#), which keeps your e-mail address hidden. Note that some privileged users such as site administrators are still able to contact you even if you choose to disable this feature.



The Open Discovery Space Project is funded by CIP-ICT-PSP-2011-5, Theme 2: Digital Content, Objective 2.4: eLearning Objective 2.4

8.



Login and complete your profile



✔ You have just used your one-time login link. It is no longer necessary to use this link to log in. Please change your password.

Account Competence

Login Information **Personal Information** Portal Notifications

Organization / Institution

Role / Position

Country

Gender

Birth Date
Date

E.g., 03/24/2015

About Me

Classification Discipline

 Foreign Language Learning
 Technology
 ICT

Contact settings

Personal contact form
Allow other users to contact you via a [personal contact form](#) which keeps your e-mail address hidden. Note that some privileged users such as site administrators are still able to contact you even if you choose to disable this feature.



The Open Discovery Space Project is funded by CIP-ICT-PSP-2011-5, Theme 2: Digital Content, Objective 2.4: eLearning Objective 2.4

8.



Login and complete your profile



Set the notifications that you want to receive from the Portal

✔ You have just used your one-time login link. It is no longer necessary to use this link to log in. Please change your password.

Account Competence

Login Information **Personal Information** **Portal Notifications**

I want to receive periodic notifications from the ODS portal

- New Activities
- New Blogs
- New Discussions
- New Events
- New Groups
- New Polls
- New Training Activities
- New Educational Content
- Updated Activities
- Updated Blogs
- Updated Discussions
- Updated Events
- Updated Groups
- Updated Polls
- Updated Training Activities
- Updated Educational Content
- Repositories Notifications

Contact settings

Personal contact form

Allow other users to contact you via a [personal contact form](#) which keeps your e-mail address hidden. Note that some privileged users such as site administrators are still able to contact you even if you choose to disable this feature.

Save



Thank you for registering to the ODS Portal and

